



# RUGBY FOOTBALL UNION **WOMEN**

## RFUW Talent Identification and Development

### February – September 2010

#### **Seniors**

- No Super 4 trials.
- HPAs in August 2010 @ 2 venues (North and South)
- Players selected from HPA's will progress directly into Super 4s competition.
- Super 4's competition will be made up of 2 squads, played over 2 weekends
- No player who participates in the WRWC (Aug – Sept 2010) will take part in Super 4's

#### **U18's**

- Junior Super Cup (2 teams play 2 games over 2 weekends – April & May 2010).
- Regional Talent Development Group sessions delivered from January to March 2010.
- HPAs in July 2010 @ 2 venues (North and South) - Saturday and Sunday (overnight accommodation).

#### **U15's**

Due to the potential changes to the RFUW player pathway from September 2010, there will be no U15 High Performance Academies in July 2010. Talented U15 players identified from the U15 Regional programme (who will remain U15 players for the 2010/2011 season) will be monitored and will receive local coaching through the RFUW Club and Coach Officers (CCO's) to support their development.

Identified U15 players [moving to U18 rugby for the 2010/2011] may be invited to attend the U18 HPA's. Attendance at the U18 HPA's will be by invite only through nomination and assessment by CCO's. Please see the process diagram below for further information.



# RUGBY FOOTBALL UNION **WOMEN**

## High Performance Academies (HPAs)

HPA's will operate at 2 venues (North and South) over the weekend of 21<sup>st</sup> & 22<sup>nd</sup> August 2010.

### **Aims and Objectives of the HPA's**

- To identify players to take part in Super 4s.
- To provide a high intensity training weekend focusing on key core skill areas as identified on the RFUW England syllabus.

### **Super 4s**

There will be no Super 4 trials in 2010. Following the HPA's, approximately 30 - 35 players from the 2 HPA venues will be selected to play in Super 4s.

They will be joined by approx 18 players from England Senior Elite squad **who do not** take part in the WRWC to create 2 squads.

The 2010 Super 4s' programme will consist of 2 squads participating in 2 games.

The 2010 Super 4s will not include players who have played in the Women's Rugby World Cup as they will be required to rest before starting the new season. Those Elite squad players who are not selected for the World Cup will play against the best of the HPA players identified during August 2010.

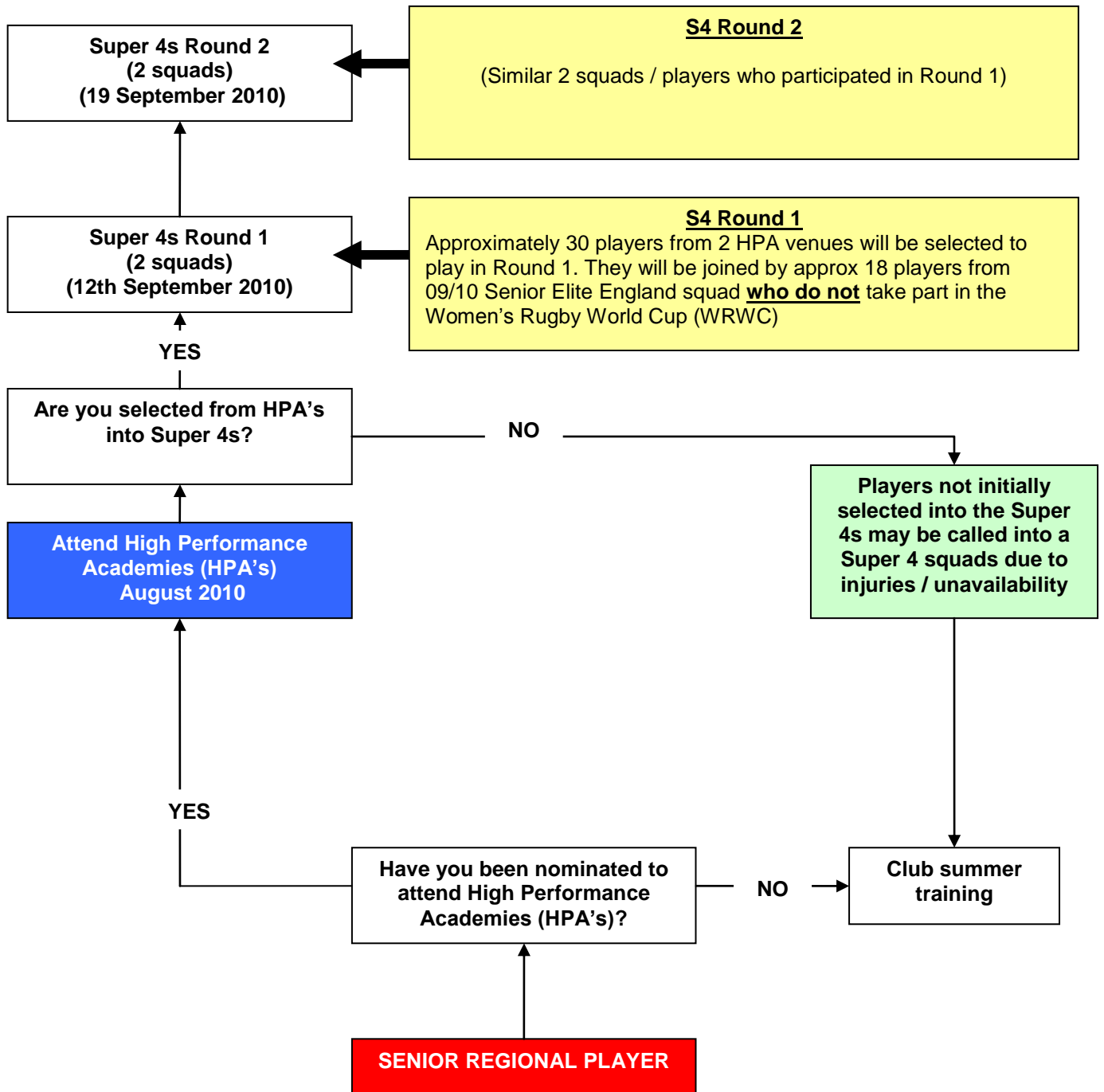
The England Senior Elite squad (44 players) for the 2010/2011 season will be selected following the completion of the Super 4's. Players who participated in the WRWC will also be considered for selection.

<b>Date</b>	<b>Action</b>
<b>March 2010</b>	Lead Regional Coaches to submit completed player assessment forms to CCO's. These documents will then be used as reference by the CCO's. These documents will be used by the CCO's as reference during HPA selection.
<b>26/04/10</b>	Online HPA registration opens. Online Registration (payment) forms for players available. <i>All nominated players will be sent link to online form</i>
<b>12/06/10</b>	Online HPA registration closes
<b>13/07/10</b>	RFUW HQ send out final HPA information letters / emails to all players
<b>21 &amp; 22/08/10</b>	<b>North HPA @ Ashville College</b> <b>South HPA @ Wellington College</b>
<b>11 &amp; 12/09/10</b>	<b>Super 4 Round 1</b>
<b>19/09/10</b>	<b>Super 4 Round 2</b>
	England Senior Elite Squad announced



# RUGBY FOOTBALL UNION **WOMEN**

## Senior– Regional Rugby to Super 4's





# RUGBY FOOTBALL UNION WOMEN

## U18s

### Junior Super Cup

Following the Regional festival, RFUW Player Development Manager and CCO's will select the nominated players to be invited to take part in the Junior Super Cup (April & May) and the HPA's (July)

2 squads of 22 players will be invited to be involved with the Junior Super Cup. The Junior Super Cup will take place over the weekends of:

- Saturday 17<sup>th</sup> & Sunday 18<sup>th</sup> April @ Lilleshall National Sports Centre (Shropshire)
- Saturday 1<sup>st</sup> & Sunday 2<sup>nd</sup> May @ Lilleshall National Sports Centre (Shropshire)

Aim of Junior Super Cup:

- To provide high quality competition (above regional level) for identified talented players.
- To provide an opportunity for players to experience high performance competition and training environments.

### U18 High Performance Academies (HPA's)

U18 HPAs will operate at 2 venues (North and South). Only players selected through the Regional Programme will be invited to attend.

- South U18 HPA: Saturday 10<sup>th</sup> & Sunday 11<sup>th</sup> July @ Wellington College
- North U18 HPA: Saturday 17<sup>th</sup> & Sunday 18<sup>th</sup> July @ TBC

The U18 HPA's will be a 2 day residential weekend delivered and managed by full time RFUW staff.

### **Aims and Objectives of the HPA's**

- To identify potential players for the U18 Talent Development Group 2010/2011.
- To provide high quality coaching for all players attending all events.

### Talent Development Group

Following the HPA's, approximately 25 – 30 players from both venues will be invited to attend the National Talent Development Group Camp which will be held on 28<sup>th</sup> – 30<sup>th</sup> July 2010. This group will be made up of the existing TDG players and identified players from HPA's.

Approximately 35 players will be invited to attend a second TDG camp to be held on 23<sup>rd</sup> – 25<sup>th</sup> August 2010. Players will be selected on their performance at the previous camp. Players will be assessed on the technical, tactical and physical ability as well as their long term ambition and commitment to being the best they can be. Players selected to attend this camp will form the U18 Talent Development Group for the 2010/2011 season.



# RUGBY FOOTBALL UNION **WOMEN**

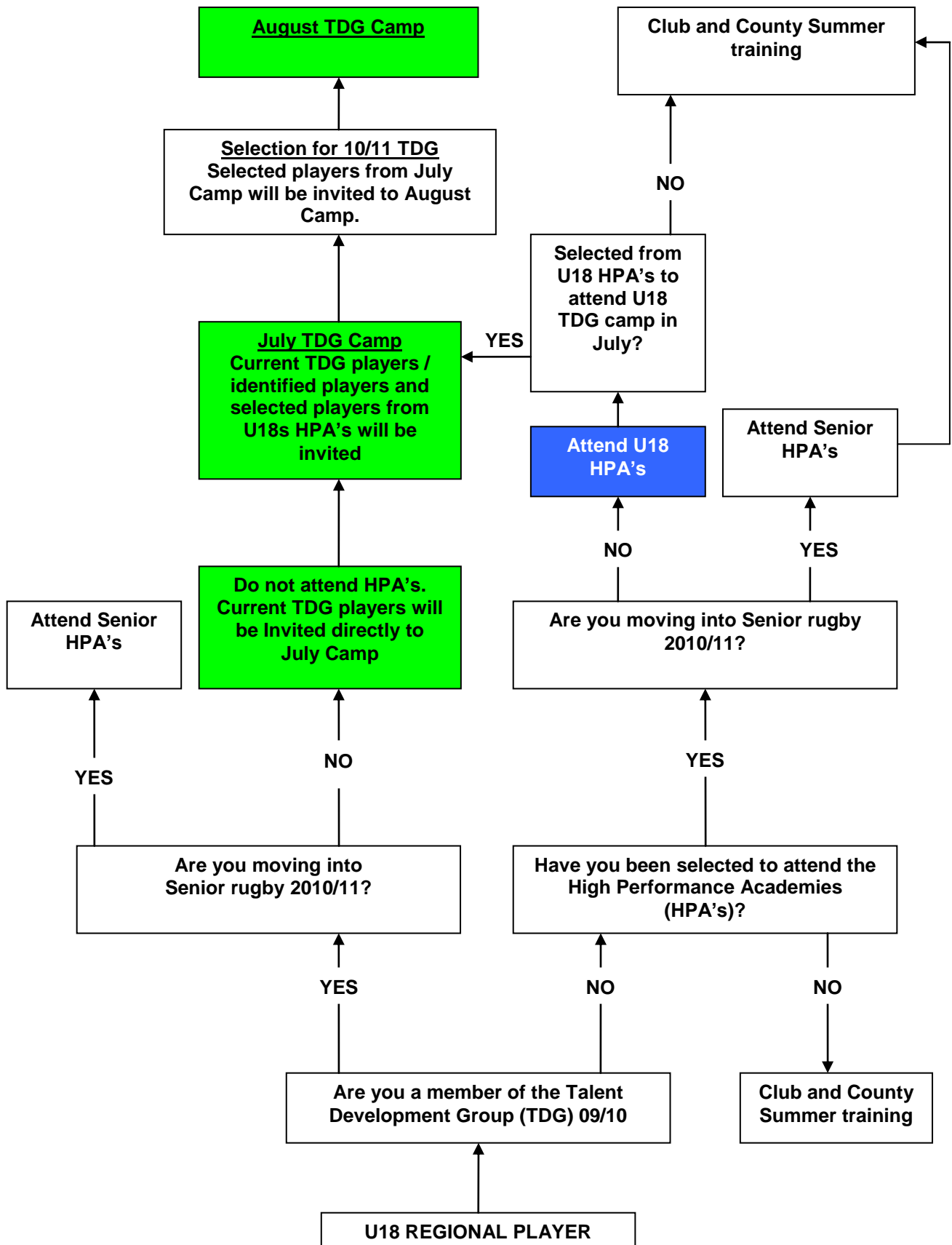
## U18 Timeline

<b>Date</b>	<b>Action</b>
<b>15/03/10</b>	Provisional JSC squads selected – players notified RFUW HQ send out player invite letters / emails to all nominated players with information and instruction regarding Junior Super Cup
<b>26/03/10</b>	Final JSC squads selected.
<b>17 &amp; 18/04/10</b>	<b>Junior Super Cup # 1</b>
<b>21/04/10</b>	U18 HPA selection complete – Regional Assessment Sheets completed and returned to CCOs. (CCO's will manage locally with coaching staff)
<b>26/04/10</b>	Online HPA registration opens. Online Registration (payment) forms for players available. <i>All nominated players will be sent link to online form</i>
<b>01 &amp; 02/05/10</b>	<b>Junior Super Cup # 2</b>
<b>07/06/10</b>	Online HPA registration closes
<b>21/06/10</b>	RFUW HQ send out final HPA information letters / emails to all players
<b>10 &amp; 11/07/10</b>	<b>South U18 HPA @ Wellington College</b>
<b>14/07/10</b>	Players from South U18 HPA invited to TDG camp 1
<b>17 &amp; 18/07/10</b>	<b>North U18 HPA</b>
<b>20/07/10</b>	Players from North U18 HPA invited to TDG camp 1
<b>28 – 30/07/10</b>	<b>Talent Development Group Camp # 1 @ Wellington College</b>
<b>04/08/10</b>	Players invited to TDG camp 2
<b>23 – 25/08/10</b>	<b>Talent Development Group Camp # 2 @ Wellington College</b>



# RUGBY FOOTBALL UNION **WOMEN**

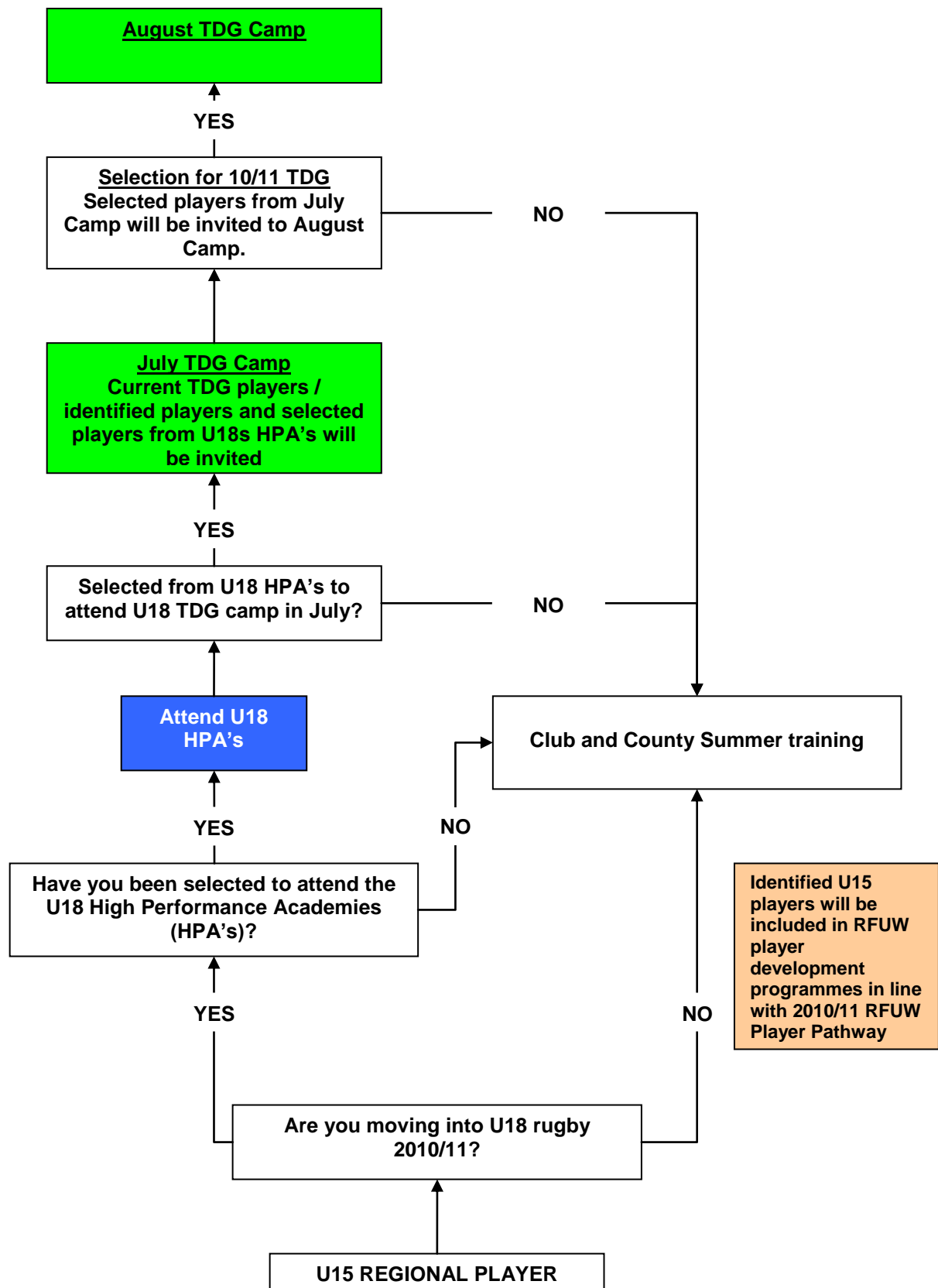
## U18 - Regional Rugby to Talent Development Group





# RUGBY FOOTBALL UNION **WOMEN**

## U15 - Regional Rugby to Talent Development Group





## RUGBY FOOTBALL UNION **WOMEN**

For further information please contact the Club & Coach Officer in your Region

<u>Region</u>	<u>CCO</u>	<u>Email</u>
North East:	Rob Thomson	<a href="mailto:Robertthomson@rfu.com">Robertthomson@rfu.com</a>
Yorkshire:	Gordon Piper	<a href="mailto:Gordonpiper@rfu.com">Gordonpiper@rfu.com</a>
North West:	Mark Harper	<a href="mailto:Markharper@rfu.com">Markharper@rfu.com</a>
West Mids:	Andy Paton	<a href="mailto:Andypaton@rfu.com">Andypaton@rfu.com</a>
East Mids:	LJ Adams	<a href="mailto:Laura-janeadams@rfu.com">Laura-janeadams@rfu.com</a>
East	Andrew Skipper	<a href="mailto:Andrewskipper@rfu.com">Andrewskipper@rfu.com</a>
London	Maggie Alphonsi	<a href="mailto:Margaretalphonsi@rfu.com">Margaretalphonsi@rfu.com</a>
South East	Simon Burgess	<a href="mailto:Simonburgess@rfu.com">Simonburgess@rfu.com</a>
South West	Kevin Moggridge	<a href="mailto:Kevinmoggridge@rfu.com">Kevinmoggridge@rfu.com</a>

Alternatively contact

### **Tom Stokes**

Player Development Manager

Email: [Tomstokes@rfu.com](mailto:Tomstokes@rfu.com)

Tel: 07971950551

Or

### **Kelly Rainey**

Player Development Support Officer

Email: [Kellyrainey@rfu.com](mailto:Kellyrainey@rfu.com)

Tel: 02088317468